

Blackpool Victoria Hospital Emergency Department

Monthly Bulletin: July 2011 to June 2012

This bulletin provides a breakdown of all attendances¹ at Blackpool Victoria Hospital Emergency Department (ED) between July 2011 and June 2012.

Between July 2011 and June 2012 there were 80,404 attendances to Blackpool Victoria Hospital ED. The month with the highest attendances was May with 7,127 attendances (**Figure 1**). There were more male than female attendances presenting at Blackpool Victoria Hospital ED (males=41,021; 51%).

Figure 2 illustrates age group of ED attendances for each month. Over three in ten ED attendances were aged over 60 years old (n=26,220; 33%) and 30-59 years old (n=24,959; 31%). Most ED attendances were referred by an emergency call or ambulance (43%) or self-referred (40%) (**Table 1**).

Table 2 details the injury group of ED attendances. The majority (90%) of attendances were recorded as other (including other injury and medical attendances). Sports injury accounted for 3% of attendances, overdose and poisoning 2%, assaults 2% and road traffic collisions (RTC) 2%.

Table 3 shows the location of incident for ED attendances. It shows that over six in ten (62%) of incidents occurred in the home, and almost a fifth (18%) occurred in a public place.

The discharge destination for ED attendances is displayed in **Table 4**. It indicates that over half (54%) attendances were discharged. Almost three in ten (28%) of attendances were admitted into hospital and 10% were referred.

Assault attendances

Between July 2011 and June 2012 there were 1,823 assault attendances to Blackpool Victoria Hospital ED. The month with the highest attendances was August with 198 attendances (**Figure 3**). There were more male than female assault attendances presenting at Blackpool Victoria Hospital ED (males=1,320; 72%).

Table 5 details the age group of assault attendances for each month. The majority of ED assault attendances were aged 15-29 (n=1,001; 55%) and 39% were 30-59 years old (n=705).

Table 6 shows the location of incident for assault attendances. It shows that half (50%) occurred in a public place, with over a quarter (27%) occurring in the home.

Table 7 illustrates the discharge destination for assault attendances to Blackpool Victoria Hospital ED. Nearly two-thirds (65%) were discharged without follow-up treatment, whilst 14% required follow-up treatment. One in twenty (5%) assault attendances were admitted to hospital.

Figure 1: Gender of ED attendances by month, July 2011 to June 2012

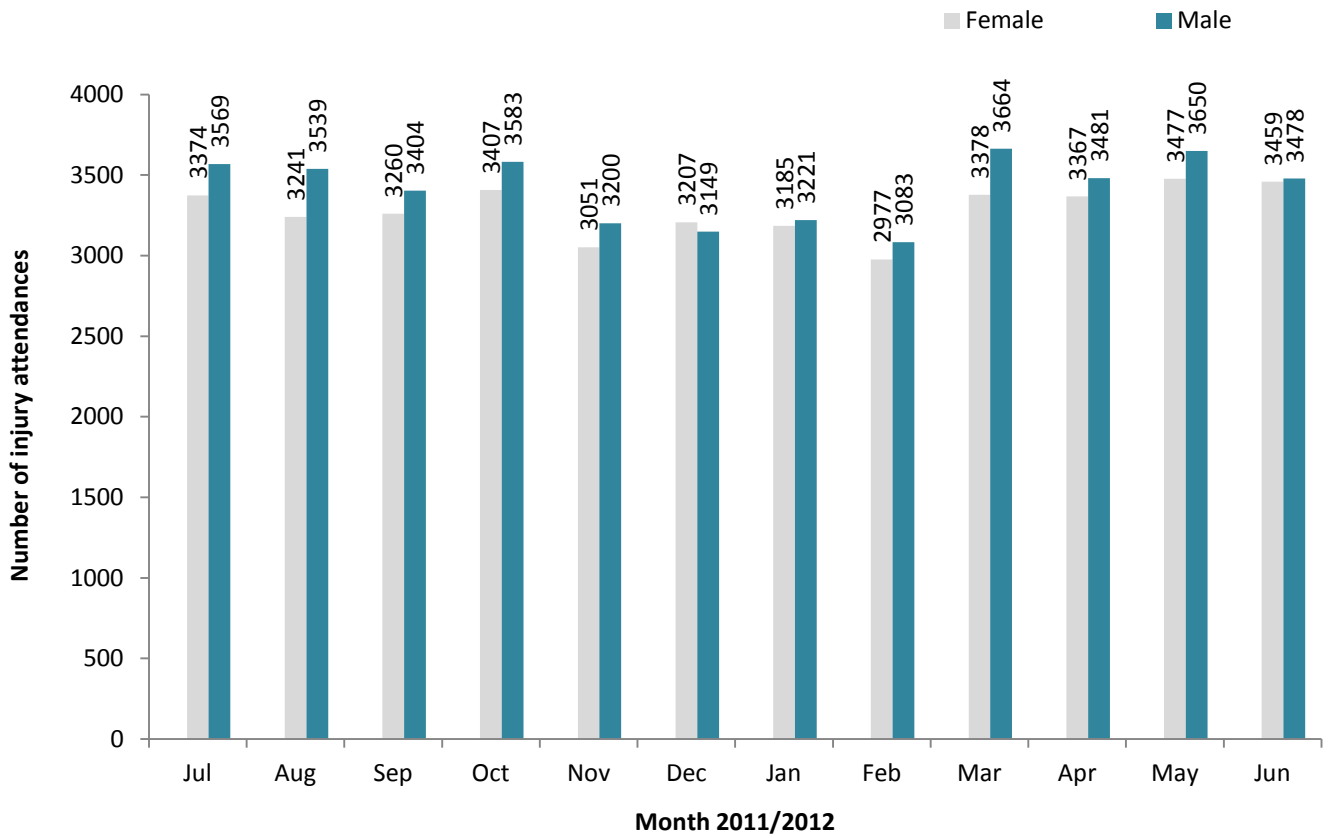


Figure 2: Age group of ED attendances by month, July 2011 to June 2012

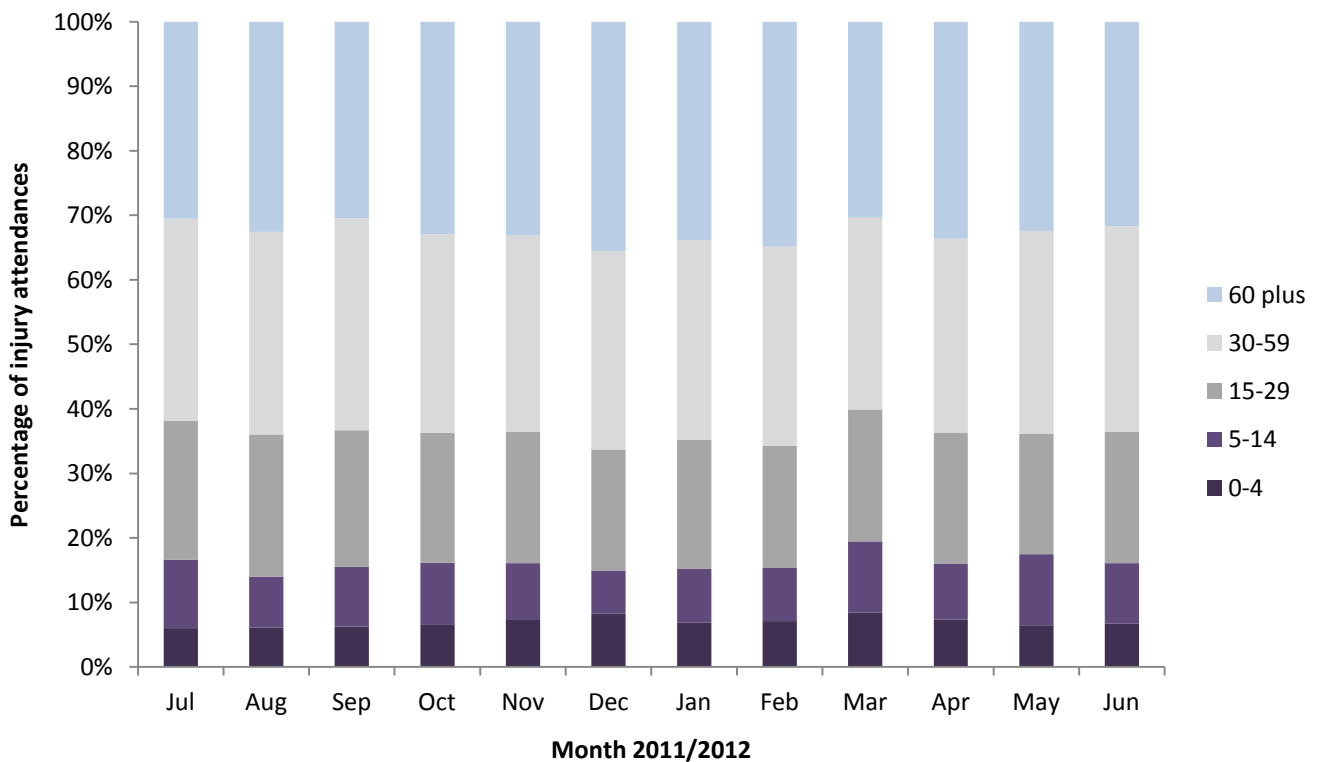


Table 1: ED attendances by source of referral and month, July 2011 to June 2012^{2,3,4}

Source of referral	Jul	Aug	Sep	Oct	Nov	Dec	Jan	Feb	Mar	Apr	May	Jun	Total	%
Emergency call/ambulance	2875	2910	2849	3113	2726	2982	2921	2710	2951	2838	2893	2874	34642	43
Self referral	3170	2879	2802	2819	2566	2368	2462	2209	2814	2722	2909	2789	32509	40
Health care provider: same or other	661	761	733	735	576	681	664	754	871	891	810	795	8932	11
GP	163	176	196	191	198	149	195	181	181	203	256	228	2317	3
Other referrer	***	***	***	15	47	54	55	67	56	82	89	92	557	1
Employer	37	53	39	44	32	29	20	43	39	32	41	39	448	1
Educational establishment	37	***	45	35	42	<15	28	41	61	17	40	29	390	0
Police	***	***	***	23	37	55	43	28	35	41	64	61	387	0
ED staff	***	***	***	14	24	23	18	26	32	22	25	30	214	0
LA/social services	***	***	***	***	***	***	***	***	***	***	***	***	5	0
FCMS	***	***	***	***	***	***	***	***	***	***	***	***	***	0
NHS direct	***	***	***	***	***	***	***	***	***	***	***	***	***	0
Optician	***	***	***	***	***	***	***	***	***	***	***	***	***	0
Other hospital	***	***	***	***	***	***	***	***	***	***	***	***	***	0
Prison service	***	***	***	***	***	***	***	***	***	***	***	***	***	0
Walk-in centre	***	***	***	***	***	***	***	***	***	***	***	***	***	0
Total	6943	6780	6664	6990	6251	6356	6406	6060	7042	6848	7127	6937	80404	100

Table 2: ED attendances by injury group and month, July 2011 to June 2012^{5,*}

Injury group	Jul	Aug	Sep	Oct	Nov	Dec	Jan	Feb	Mar	Apr	May	Jun	Total	%
Other injury	6255	6080	5898	6235	5654	5771	5813	5506	6327	6198	6530	6342	72609	90
Sports injury	182	169	252	246	205	113	156	178	257	208	186	118	2270	3
Overdose and poisoning	158	138	175	151	106	158	153	160	166	157	174	180	1876	2
Assault	190	198	172	185	130	153	141	102	165	146	99	142	1823	2
RTC	120	162	137	139	121	126	111	89	101	100	106	123	1435	2
Deliberate self-harm (DSH)	38	33	30	34	35	35	32	25	26	39	32	32	391	0
Total	6943	6780	6664	6990	6251	6356	6406	6060	7042	6848	7127	6937	80404	100

* In December 2010, the overdose injury group was removed due to a change in the ED's IT system. Since this time, cases have been categorised into one of the other injury groupings (e.g. 'other injury' / 'deliberate self-harm'). Such cases are however identifiable via another data field, 'presenting complaint'. Where injury group is recorded as 'other injury' and 'presenting complaint' is recorded as overdose/poisoning these cases have been categorised in this table as overdose/poisoning. Please note, during this period, 26 DSH cases also had overdose/poisoning recorded as their presenting complaint.

Table 3: ED attendances by location of incident and month, July 2011 to June 2012[^]

Location	Jul	Aug	Sep	Oct	Nov	Dec	Jan	Feb	Mar	Apr	May	Jun	Total	%
Home	3877	3991	3894	4093	3901	4265	4322	4060	4415	4273	4371	4225	49687	62
Public place	1534	1622	1335	1460	1034	924	885	922	1132	1224	1264	1240	14576	18
Other	1084	856	966	973	855	848	842	691	958	979	1031	1054	11137	14
Workplace	294	294	264	281	243	207	195	222	272	256	235	277	3040	4
Educational establishment	154	17	205	183	218	112	162	165	260	109	223	141	1949	2
Total	6943	6780	6664	6990	6251	6356	6406	6060	7042	6848	7127	6937	80404	100

[^]There were 15 attendances where location was unknown; these have been included in the total figure.

Table 4: ED attendances by discharge destination and month, July 2011 to June 2012^{}**

Discharge destination	Jul	Aug	Sep	Oct	Nov	Dec	Jan	Feb	Mar	Apr	May	Jun	Total	%
Discharged	3925	3715	3691	3723	3458	3301	3329	3216	3832	3640	3886	3920	43636	54
Admitted	1685	1765	1756	1991	1812	1894	1931	1780	1934	2002	2003	1849	22402	28
Referred	788	689	664	660	574	661	658	661	780	671	738	688	8232	10
Incomplete treatment	418	466	431	468	297	357	342	283	335	352	322	305	4376	5
Transferred	82	71	64	97	56	79	85	61	101	88	97	105	986	1
Other	22	50	32	33	27	39	35	35	38	73	53	54	491	1
Died	23	24	26	18	27	25	26	24	22	22	28	16	281	0
Total	6943	6780	6664	6990	6251	6356	6406	6060	7042	6848	7127	6937	80404	100

^{**}Due to a change in the ED's IT system the coding for the discharge destination field has been updated. This report uses the new coding fields in use since December 2010.

Assaults

Figure 3: Number of ED assault attendances by gender and month, July 2011 to June 2012

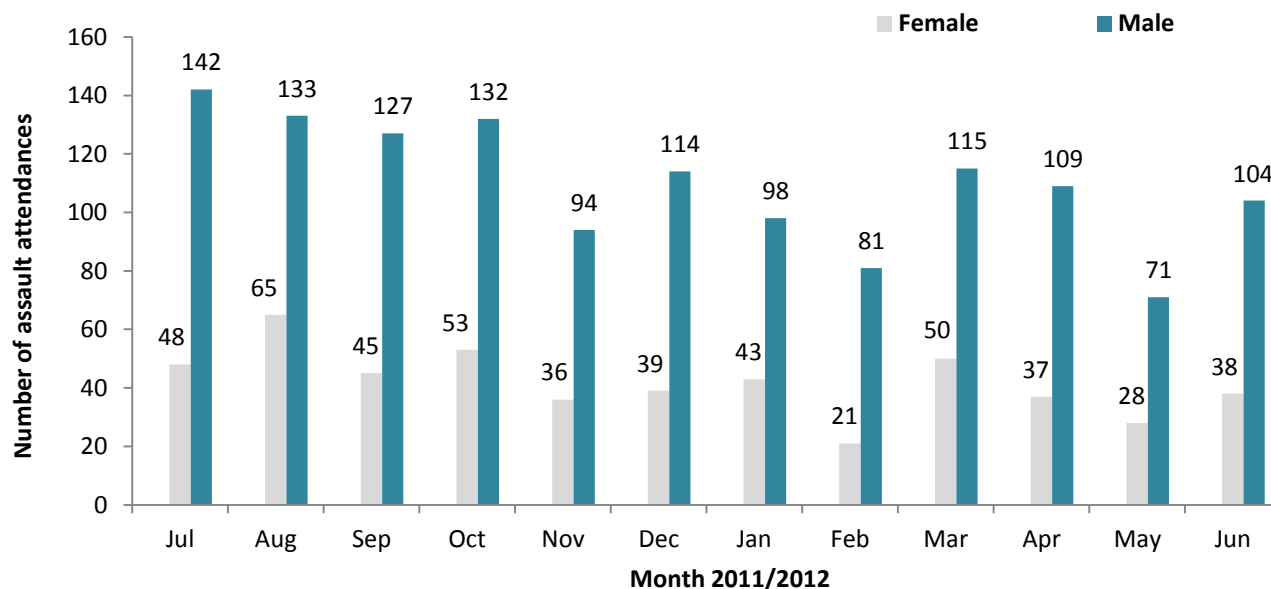


Table 5: ED assault attendances by age group and month, July 2011 to June 2012

Age group	Jul	Aug	Sep	Oct	Nov	Dec	Jan	Feb	Mar	Apr	May	Jun	Total	%
0-4	0	***	***	***	0	0	0	0	0	***	***	0	***	0
5-14	10	8	5	10	***	***	<8	***	11	8	5	***	76	4
15-29	101	113	86	104	64	95	85	54	91	87	52	69	1001	55
30-59	73	71	77	67	57	54	49	44	57	49	39	68	705	39
60 plus	6	***	***	***	<6	***	***	***	6	***	***	***	<38	2
Total	190	198	172	185	130	153	141	102	165	146	99	142	1823	100

Table 6: ED assault attendances by location of incident and month, July 2011 to June 2012

Location	Jul	Aug	Sep	Oct	Nov	Dec	Jan	Feb	Mar	Apr	May	Jun	Total	%
Public place	96	95	84	92	67	77	71	53	91	76	50	60	912	50
Home	49	56	45	57	40	42	33	25	40	37	27	35	486	27
Other	35	39	36	25	13	26	25	16	20	15	12	28	290	16
Workplace	<8	<9	<7	<10	<9	<6	<12	<8	9	<16	5	<16	105	6
Educational establishment	***	***	***	***	***	***	***	***	5	***	5	***	30	2
Total	190	198	172	185	130	153	141	102	165	146	99	142	1823	100

Table 7: ED assault attendances by discharge destination and month, July 2011 to June 2012

Discharge destination	Jul	Aug	Sep	Oct	Nov	Dec	Jan	Feb	Mar	Apr	May	Jun	Total	%
Discharged	120	127	99	106	95	94	88	70	112	101	70	94	1176	65
Other	30	34	32	40	19	26	24	<16	21	21	<18	16	295	16
Follow-up	26	28	31	23	8	24	21	16	24	17	8	27	253	14
Admitted	14	9	10	16	8	9	8	***	8	7	***	5	99	5
Total	190	198	172	185	130	153	141	102	165	146	99	142	1823	100

Published July 2012

Johnathan Rooney (TIIG Officer), Val Upton (Senior Public Health Researcher / Analyst)
 Centre for Public Health, Liverpool John Moores University, 2nd Floor, Henry Cotton Campus, Liverpool, L3 2ET
 Tel: 0151 231 4539 Email: j.rooney@ljmu.ac.uk
 Website: www.tiig.info (please note data requests should be made through the website)

¹For other EDs, TIIG reports on injuries only. However, this report includes all attendances at Blackpool Victoria Hospital ED. This is due to the medical and injury attendances being categorised within the patient group 'other'.

²GP=general practitioner, LA=local authority, FCMS=Fylde coast medical services.

³Please note that all numbers less than five have been suppressed (with ***) in line with patient confidentiality; and if there is only one number less than five in a category then two numbers will be suppressed to prevent back calculations from totals.

⁴Please note percentages might not add to one hundred due to rounding.

⁵Due to low numbers firework injuries (n=19) have been included under other injury.